

GT

REDHEAT

NEW HEATING SOLUTIONS

PRODUCTS AND SYSTEMS FOR LOCALIZED INFRARED HEATING

EFFICIENT, ECOLOGICAL, SAFE



The sun inside

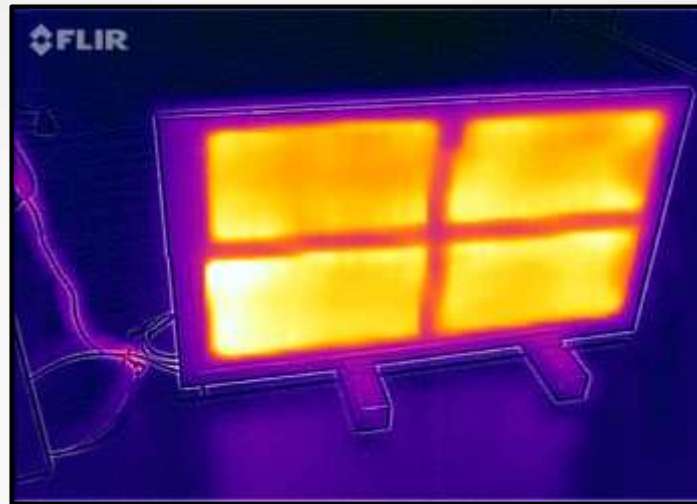


Infrared
Technology

INNOVATIVE LINE OF RADIATING HEATING PANELS



AESTHETICS



EFFICIENCY



FUNCTIONALTY

RADIATING ELECTRICAL PANELS WITH HIGH SECURITY AND EFFICIENCY

STRONG AND DURABLE WITH CUSTOM FINISHING

QUICK AND EASY INSTALLATION, REMOVABLE AND REPOSITIONABLE

**Infrared
Technology**

REDFLAT

IS A RADIATING PANEL POWERED WITH VERY LOW VOLTAGE (12-30 Volt)

The standard size is 110 X 40 X 1,2 cm for about 1 Kg of weight.

- It has thermal power max of 200 watts for single panel, with a surface temperature of ca. 50 °C
- Its low weight allows the application even with simple Velcro.
- The ease of handling makes it possible to move it from time to time where it is necessary.
- REDFLAT is moderately flexible and adapts well to curved surfaces.
- The low voltage (12 or 24 volt) can not get a shock even in case of accidental damage or cuts.
- Strong and durable the standard version is white finish, but upon request the aesthetic is customizable.

REDFLAT IS AVAILABLE BOTH IN 12 AND 24 Volt

Infrared
Technology

REDFLAT

REDFLAT HEATING SYSTEMS ARE POWERED ONLY WITH VERY LOW VOLTAGE (24-30 volts)

CONNECTION TO 230 VOLT ELECTRICAL POWER IS MADE THROUGH OUR SPECIAL ADAPTERS CLASS II SELV SPECIALLY DESIGNED AND BUILT.



- **SILENT** *(No moving parts)*
- **SAFE** *(Isolated and with double protection)*
- **LONG LASTING** *(First quality electrical components)*

AFTER THE ADAPTER, THE ONLY CURRENT FLOWING IN THE SYSTEM IS 24 Volt ELIMINATING ANY RISK OF ELECTRIC SHOCK, FIRE, ACCIDENTS AND INJURIES



THE ONLY ONE SAFE *EVEN IN CASE OF SNOW, ICE, WATER OR UNINTENTIONAL DAMAGE (puncture, cut, tear)*

**Infrared
Technology**

R=DFLAT IS IDEAL ON BOATS, MOTORHOMES AND CARAVANS THAT NEED TO HEAT THE CABINS REDUCING CONSUMPTION TO THE MAX AND IMPROVING SAFETY ABOARD



Depending on the version selected (12 or 24 V) you can connect directly to the onboard system.

Besides boats, campers and other vehicles equipped with cabins, R=DFLAT is used as a portable electric stove, or as radiant panel to be mounted under desks, workbenches or bars, restaurants, etc. in combination with the supplied 230 Volt adapters.

Infrared
Technology

RISCALDARE IN SICUREZZA E CON BASSI CONSUMI ELETTRICI LE CABINE DELLE BARCHE



REDFLAT IS IDEAL NOT ONLY AS A HEATING DURING THE STAY ON BOARD BUT IT'S ALSO PERFECT FOR THE MAINTENING DURING THE WINTER STORAGE

↳ When low temperatures and high humidity contribute to the deterioration of the materials and the formation of mold.



Electric heaters not only consumes 20 times as much, due to high temperature they inevitably damage the materials on board that are within short distance.



Infrared
Technology

REDFLAT INFRARED HEATING SYSTEMS

FOR THE LOCALIZED HEATING OF SMALL ROOMS SUCH AS:
CABINS, SMALL BOATS AND CARAVAN'S BEDS AND BUNKS

THE MODERATE POWER AT SHORT DISTANCE ALLOWS



- ENERGETIC AND ECONOMIC SAVING



- BATTERY CONSUMES REDUCTION



- NO RISK OF STOVES ACCIDENTS



- REDUCTION OF THE STEAM PRODUCED



- HYGIENE (Less mold)



- PHISYOLOGICAL BENFITS



Infrared
Technology

THE SAFETY OF REDCARPET



NO RISK OF BURNS



NO RISK OF FIRES



NO RISK OF ELECTRIC SHOCK *EVEN IN PRESENCE OF WATER*



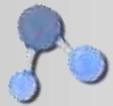
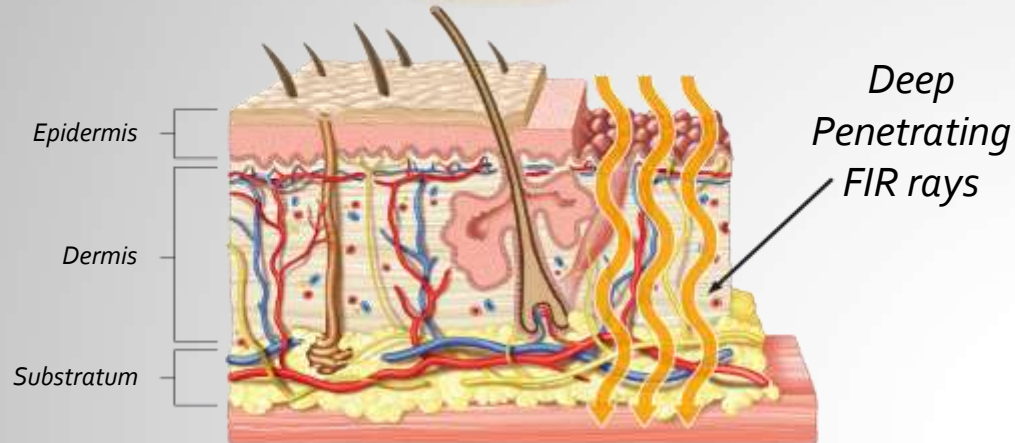
NO EMISSION OR LEAK OF TOXIC GASES

Infrared
Technology

EFFECTS AND BENEFITS OF INFRAREDS ON THE HUMAN BODY

THE LONG INFRARED ENERGY

PENETRATES DEEPLY INTO THE SKIN



Optimizing the role of water in cellular metabolism

PREVENTING

- LACTIC ACID
- INFLAMMATIONS

IMPROVING

- VASCULARIZATION
- SKIN REGENERATION



IMMEDIATE EFFECTS

- SOFT HEAT, RELAXING AND ANTIFATIGUE



EFFECTS ON THE BODY

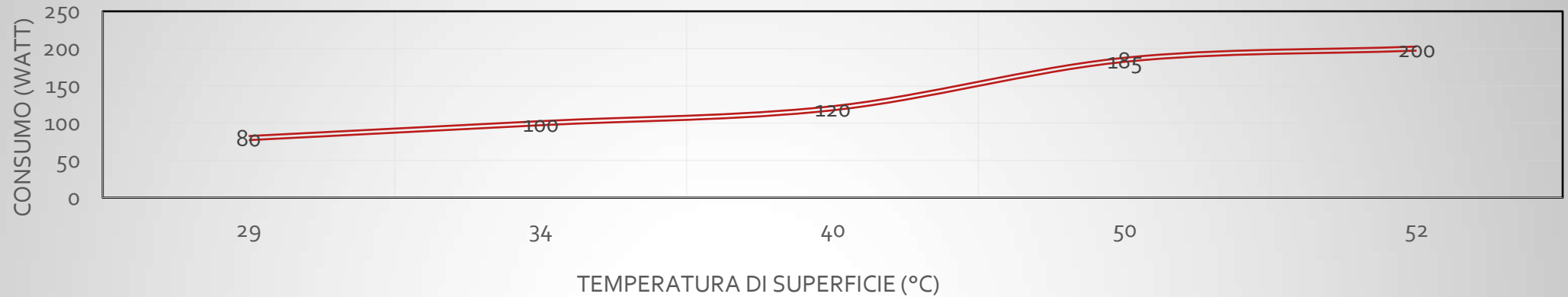
- TROPHIC EFFECT
- DETOX EFFECT
- ANALGESIC AND PAIN REDUCING EFFECT



HYGIENE

- LESS HUMIDITY THEREFORE LESS MOLD
- LESS GERMS AND BAD SMELLS
- PREVENTS BACTERIAL PROLIFERATION

GRAFICO CONSUMO/TEMPERATURA



- The innovative heating system is capable to reach high powers *(up to 200 Watt/Modulo)*
- Capable to reach surface temp of 50 – 60- °C
- Easy installation, repositioning and storing.
- Strong and Durable



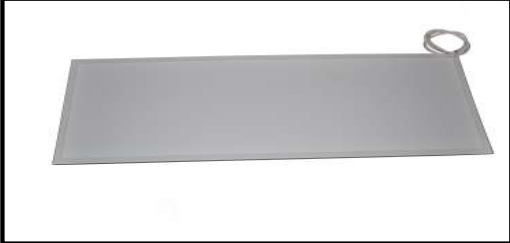

THE ONLY ONE SAFE

IN PRESENCE OF WATER, ICE, SNOW OR UNINTENTIONAL DAMAGE

Infrared
Technology

REDFLAT

TECHNICAL SPECS

REDFLAT	DIMESIONS	POWER (Watt)	VOLTAGE	POWER CABLE LENGHT	THICKNESS	WEIGHT
«CABIN»						
	55 X 105	max 100	24 - 30 volt	2,00 m	13 mm	2,2 Kg
«PORTABLE»						
	55 X 55	max 100	24 - 30 volt	2,00 m	13 - 30 mm	1,4 Kg
	55 X 105	max 200	24 - 30 volt	2,00 m	13 - 30 mm	2,5 Kg
	105 X 105	max 400	24 - 30 volt	2,00 m	13 - 30 mm	4,5 Kg
	With stand and aluminum frame					

I NOSTRI PRODOTTI SONO INTERAMENTE RICICLABILI E VENGONO IN PARTE REALIZZATI CON MATERIALI DA RICICLO

Infrared
Technology

COMPARISON WITH THE TRADITIONAL SYSTEMS

	Oil/Gas Stove	Electric Stove	REDHEAT
Fuel	Fossil Fuel	Electricity	Electricity
Way of heating	Conduction and Convection	Conduction	Radiation
Long Infrared Rays	None	None	More than 90%
Heating Time	30~60 minutes	15~30 minutes	4~10 minutes
Noise and dust	Produced	None	None
Electromagnetic Waves	None	High	Harmless for the human body

REDCARPET systems consumes ONLY 240W/m²
0,038 €/h per m² **

*** Calculated with the Italian average cost of electricity of 0,16€/KWh*

Infrared
Technology

INFRARED TECHNOLOGY

- The infrared radiation, **the same as the sun's rays**, transmits heat by direct irradiation of the bodies, without the need to heat the air.
- Radiation is a method of efficient heating and allows to remarkably reduce power consumption.
- The REDHEAT products use semiconductor systems with low voltage current **(12 - 30 volts)** which ensures safety even in the presence of water, snow, ice and in the event of unintentional damage.
- The low power and moderate temperature (400 W/m^2 per $50 \text{ }^\circ \text{C}$) does not trigger any convective movement, so the air is cleaner.
- It is demonstrated that infrareds have physiological and beneficial effects on the human organism. In fact they are widely used in the medical field.

MAIN ADVANTAGES



- **ECONOMY:** Irradiation combined with very low voltage allows a significant reduction in energy consumption.



- **SAFETY :** No combustion, incandescence, or 230 Volt current.
No risk of electric shock or gas intoxication.



- **HYGIENE:** The emission of anions inhibits proliferation of germs and reduces odors.
The still air is clean, dry and does not carry fungal spores and mold.



- **HEALTH:** It has beneficial physical effects, as demonstrated when applied in physiotherapy and in the medical field. Trophic effect, analgesic effect and to decontract muscles.



- **COMFORT:** Soft warmth, cozy, comfortable, rising from beneath.



- **ECOLOGY:** Recycled and recyclable materials of high durability, low energy consumption.

The REDHEAT product line is engineered and designed by Green Technologies SA
The distribution and marketing are carried out in collaboration with GTE Elettrica s.r.l.



www.greentechnologies.ch



www.gte-elettrica.it

PATENTING PRODUCTS FOR INDUSTRIAL INNOVATION

The intellectual property of the REDHEAT project is owned by Green Technologies SA.

Patent n° 001406966/2011

Patent Pending n° SP0001/2015

Patent pending n° SP0002/2015



Infrared
Technology